

Be a Qualified Professional in Product Design

PTC Creo is a scalable, interoperable suite of product design software that delivers fast time to value. It helps teams create, analyze, view and leverage product designs downstream utilizing 2D CAD, 3D CAD, parametric & direct modeling.

Creo/parametric - Course Content

- ◆ Creo/parametric Concepts
- ◆ Creating Sketcher Geometry
- ◆ Selecting and Editing
- ◆ Utilizing Internal Sketches and Embedded Datums
- ◆ Creating Holes and Shells
- ◆ Variable Section Sweeps, Helical Sweeps and Swept Blends
- ◆ Group, Copy and Mirror Tools
- ◆ Advanced Reference Management
- ◆ Layers, Family Tables & Udf
- ◆ Exploding Assemblies
- ◆ Editing Surface Features
- ◆ Creating Drawing Details
- ◆ Creating And Using Component Interfaces
- ◆ Using Assembling Features And Shrinkwrap
- ◆ Understanding Simplified Reps
- ◆ Substituting Components by Rep, Envelope, And Model
- ◆ Introduction to Sheet Metal Design
- ◆ Unbend, Bend Back and Cuts
- ◆ Sheet Metal Forms
- ◆ Converting Solid Parts
- ◆ Gd&t
- ◆ Using the Creo/Parametric Interface
- ◆ Creating Extrudes, Revolves and Rids
- ◆ Creating Datum Features
- ◆ Creating Sweep and Blends
- ◆ Creating Rounds, Chamfers and Drafts
- ◆ Creating Patterns
- ◆ Measuring and Inspecting Models
- ◆ Relations and Parameters
- ◆ Assembling with Constraints
- ◆ Creating Surface Features
- ◆ Creating Drawing Views
- ◆ Using Advanced Assembling Constraints
- ◆ Creating and Using Flexible Components
- ◆ Replacing Components in Assembly
- ◆ Creating Cross-section, Display Styles, and Combined Views
- ◆ Creating the Using Assembly Structure and Skeletons
- ◆ Primary Walls, Secondary and Unattached Walls
- ◆ Notches and Punches
- ◆ Bending & Unbending Sheet Metal Geometry
- ◆ Sheet Metal Drawing with Flat States and Bend Order Table

Courseware Issued: • Creo/Parametric Reference Guide • Project Workbook

Duration: 80 Hrs.

CADDEX

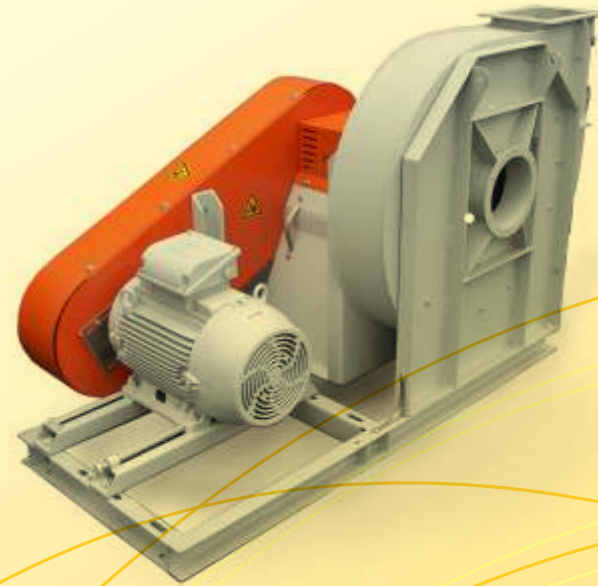
Career Scope

Prospective Job Profiles

- ◆ Structural Engineer
- ◆ Server Engineer
- ◆ Senior Signaling Engineer
- ◆ Sales Engineer
- ◆ System Engineer
- ◆ Mechanical Design Engineer
- ◆ Senior Manufacturing Engineer
- ◆ Product Design Engineer
- ◆ Mould Designer
- ◆ Tool Designer

Relevant Industries

- ◆ Footwear & Apparel
- ◆ Consumer Products
- ◆ Retail
- ◆ Automotive
- ◆ Medical Devices
- ◆ Industrial Equipment
- ◆ Electronics and High Tech



- ◆ Flexible Timing in Morning & Evening
- ◆ Industry Experienced Certified Trainers

SE-387A, SHASTRI
NAGAR, NH24, GHAZIABAD
0120 4248810
9873589082/83

For more Information Visit

WWW.CADDEXINDIA.COM